

APPENDIX I

Additional Noise Monitoring

FIELD SURVEY FORM			
DATE: 25/04/2018	MEASUREMENT SITE: vil. Argveta	SITE NO.: Point 1	FIELD TECHNICIANS: Iliia Mirotdadze Vepkhvia Maghlakelidze
SOUND LEVEL METER: (medel) RION NL-52	MICROPHONE: <input checked="" type="checkbox"/> WIND SCREEN <input type="checkbox"/> NON-POLAR <input type="checkbox"/> POLARIZED <input type="checkbox"/> 1/2-INCH <input type="checkbox"/> FREEFIELD <input type="checkbox"/> 1-INCH <input type="checkbox"/> RANDOM		NOTES: SYSTEM PWR: <input checked="" type="checkbox"/> BAT <input type="checkbox"/> AC (observations at start of measurement)
CALIBRATOR: NC 74 (model) S/N 34257042	Freq. Hz. <input type="checkbox"/> 250 <input checked="" type="checkbox"/> 1000 <input type="checkbox"/> _____	CALIBRATION RECORD: Input, dB / Reading, dB / Offset, dB / Time Before 94 / 94 / 0 / 25/04/19, 17:50 After 94 / 94 / 0 / 26/04/19, 18:15	TEMP: _15_ °C R.H.: _51_ % WIND SPEED: ___0-1___ MP/Sec TOWARD (DIR): S-SE SKIES: Sunny, Partially Cloudy
METER SETTINGS: <input type="checkbox"/> A-WTD <input type="checkbox"/> LINEAR <input checked="" type="checkbox"/> SLOW <input type="checkbox"/> 1/1 OCT <input checked="" type="checkbox"/> INTERVALS 15-MINUTE <input type="checkbox"/> C-WTD <input type="checkbox"/> IMPULSE <input type="checkbox"/> FAST <input type="checkbox"/> 1/3 OCT <input type="checkbox"/> L _n PERCENTILE VALUES			CAMERA _____ PHOTO NOS. _____

NOTES:												MEAS. TYPE:		
Dist. to Center of Nearest Lane _____ <input type="checkbox"/> Video <input type="checkbox"/> Radar												Counts AT MT HT		
												<input checked="" type="checkbox"/> Long Term <input type="checkbox"/> Short Term		
DATE	START TIME	STOP TIME	L-EQ (24h Ave.)	L-EQ (24h Min.)	L-EQ (24h Max.)	L-MIN (24h Ave.)	L-MIN (24h Min.)	L-MIN (24h Max.)	L-MAX (24h Ave.)	L-MAX (24h Min.)	L-MAX (24h Max.)	NOTES:		
25/04/2019	17:00:00 PM											Quite area, inside the Garden.		
26/04/2019		17:00:00 PM	48.86	42.10	59.70	40.84	34.20	46.50	59.44	49.50	67.90			



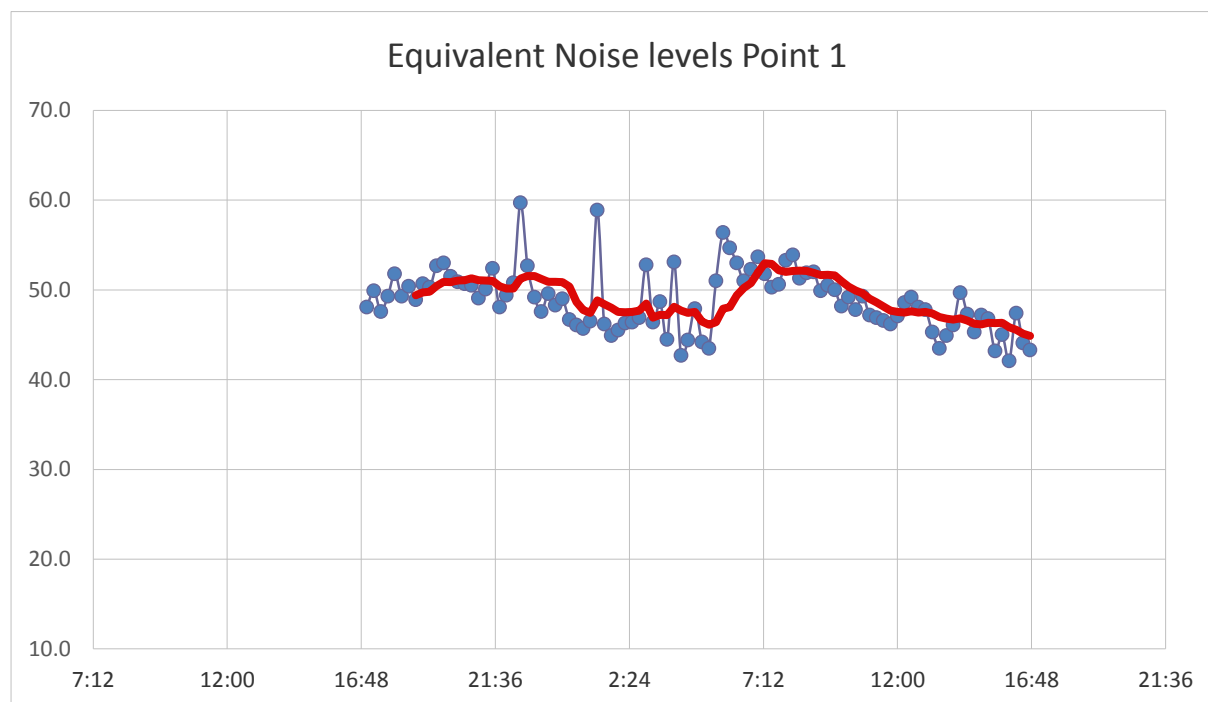
	Beginning Time of	Interval					
Meas Date	Hourly Intervals	Duration (seconds)	Leq	Lmax	Lmin		

Section F4 of Khevi-Ubisa-Shorapani-Argveta section (E60 Highway)
 Environmental Impact Assessment

25-Apr-19	17:00		48.1	58.8	43.0	17:00	48.1
25-Apr-19	17:15	00:15	49.9	64.8	41.9	17:15	49.9
25-Apr-19	17:30	00:15	47.6	53.6	41.6	17:30	47.6
25-Apr-19	17:45	00:15	49.3	55.7	42.6	17:45	49.3
25-Apr-19	18:00	00:15	51.8	63.0	44.0	18:00	51.8
25-Apr-19	18:15	00:15	49.3	59.7	43.9	18:15	49.3
25-Apr-19	18:30	00:15	50.4	59.5	43.9	18:30	50.4
25-Apr-19	18:45	00:15	48.9	57.5	43.9	18:45	48.9
25-Apr-19	19:00	00:15	50.7	61.1	44.9	19:00	50.7
25-Apr-19	19:15	00:15	50.3	59.3	44.1	19:15	50.3
25-Apr-19	19:30	00:15	52.7	60.3	46.2	19:30	52.7
25-Apr-19	19:45	00:15	53.0	61.7	46.1	19:45	53.0
25-Apr-19	20:00	00:15	51.5	67.9	45.9	20:00	51.5
25-Apr-19	20:15	00:15	50.9	57.2	45.8	20:15	50.9
25-Apr-19	20:30	00:15	50.7	60.1	46.3	20:30	50.7
25-Apr-19	20:45	00:15	50.5	61.1	45.0	20:45	50.5
25-Apr-19	21:00	00:15	49.1	61.9	43.2	21:00	49.1
25-Apr-19	21:15	00:15	50.1	64.3	43.2	21:15	50.1
25-Apr-19	21:30	00:15	52.4	60.8	45.5	21:30	52.4
25-Apr-19	21:45	00:15	48.1	54.6	43.5	21:45	48.1
25-Apr-19	22:00	00:15	49.4	55.2	44.1	22:00	49.4
25-Apr-19	22:15	00:15	50.8	58.9	45.0	22:15	50.8
25-Apr-19	22:30	00:15	59.7	55.8	44.6	22:30	59.7
25-Apr-19	22:45	00:15	52.7	57.0	45.9	22:45	52.7
25-Apr-19	23:00	00:15	49.2	57.2	45.4	23:00	49.2
25-Apr-19	23:15	00:15	47.6	53.0	44.6	23:15	47.6
25-Apr-19	23:30	00:15	49.6	59.8	44.9	23:30	49.6
25-Apr-19	23:45	00:15	48.3	58.1	44.1	23:45	48.3
26-Apr-19	00:00	00:15	49.0	53.2	45.0	00:00	49.0
26-Apr-19	00:15	00:15	46.7	52.8	40.9	00:15	46.7
26-Apr-19	00:30	00:15	46.1	52.6	41.9	00:30	46.1
26-Apr-19	00:45	00:15	45.7	49.6	40.2	00:45	45.7
26-Apr-19	01:00	00:15	46.5	52.8	42.0	01:00	46.5
26-Apr-19	01:15	00:15	58.9	56.9	42.7	01:15	58.9
26-Apr-19	01:30	00:15	46.2	56.9	38.8	01:30	46.2
26-Apr-19	01:45	00:15	44.9	49.5	38.7	01:45	44.9
26-Apr-19	02:00	00:15	45.5	60.9	39.1	02:00	45.5
26-Apr-19	02:15	00:15	46.3	56.3	38.1	02:15	46.3
26-Apr-19	02:30	00:15	46.4	56.9	38.6	02:30	46.4
26-Apr-19	02:45	00:15	46.9	57.5	38.5	02:45	46.9
26-Apr-19	03:00	00:15	52.8	65.5	39.0	03:00	52.8
26-Apr-19	03:15	00:15	46.4	60.6	36.7	03:15	46.4
26-Apr-19	03:30	00:15	48.7	58.0	38.3	03:30	48.7
26-Apr-19	03:45	00:15	44.5	60.6	35.9	03:45	44.5
26-Apr-19	04:00	00:15	53.1	51.5	36.4	04:00	53.1
26-Apr-19	04:15	00:15	42.7	51.0	36.2	04:15	42.7
26-Apr-19	04:30	00:15	44.4	56.7	36.1	04:30	44.4
26-Apr-19	04:45	00:15	47.9	62.3	38.6	04:45	47.9
26-Apr-19	05:00	00:15	44.2	53.7	37.2	05:00	44.2
26-Apr-19	05:15	00:15	43.5	54.1	37.8	05:15	43.5
26-Apr-19	05:30	00:15	51.0	62.2	39.0	05:30	51.0

Section F4 of Khevi-Ubisa-Shorapani-Argveta section (E60 Highway)
 Environmental Impact Assessment

26-Apr-19	05:45	00:15	56.4	64.4	46.5	05:45	56.4
26-Apr-19	06:00	00:15	54.7	66.1	44.7	06:00	54.7
26-Apr-19	06:15	00:15	53.0	63.6	44.0	06:15	53.0
26-Apr-19	06:30	00:15	51.0	62.7	42.9	06:30	51.0
26-Apr-19	06:45	00:15	52.3	62.3	44.7	06:45	52.3
26-Apr-19	07:00	00:15	53.7	63.7	44.5	07:00	53.7
26-Apr-19	07:15	00:15	51.8	65.3	42.6	07:15	51.8
26-Apr-19	07:30	00:15	50.3	62.9	41.4	07:30	50.3
26-Apr-19	07:45	00:15	50.6	61.9	42.0	07:45	50.6
26-Apr-19	08:00	00:15	53.3	62.6	42.0	08:00	53.3
26-Apr-19	08:15	00:15	53.9	64.5	42.2	08:15	53.9
26-Apr-19	08:30	00:15	51.3	61.2	41.8	08:30	51.3
26-Apr-19	08:45	00:15	51.9	63.1	42.1	08:45	51.9
26-Apr-19	09:00	00:15	52.0	64.4	40.9	09:00	52.0
26-Apr-19	09:15	00:15	49.9	59.8	40.5	09:15	49.9
26-Apr-19	09:30	00:15	50.5	60.7	41.3	09:30	50.5
26-Apr-19	09:45	00:15	50.0	60.8	41.5	09:45	50.0
26-Apr-19	10:00	00:15	48.2	61.2	40.8	10:00	48.2
26-Apr-19	10:15	00:15	49.2	51.0	41.9	10:15	49.2
26-Apr-19	10:30	00:15	47.8	60.4	40.7	10:30	47.8
26-Apr-19	10:45	00:15	49.3	60.8	39.5	10:45	49.3
26-Apr-19	11:00	00:15	47.2	61.3	39.9	11:00	47.2
26-Apr-19	11:15	00:15	46.9	61.8	39.2	11:15	46.9
26-Apr-19	11:30	00:15	46.6	55.9	39.1	11:30	46.6
26-Apr-19	11:45	00:15	46.2	61.7	40.2	11:45	46.2
26-Apr-19	12:00	00:15	47.1	62.1	37.5	12:00	47.1
26-Apr-19	12:15	00:15	48.6	65.8	37.9	12:15	48.6
26-Apr-19	12:30	00:15	49.2	65.6	40.1	12:30	49.2
26-Apr-19	12:45	00:15	48.1	63.6	37.2	12:45	48.1
26-Apr-19	13:00	00:15	47.8	61.0	37.3	13:00	47.8
26-Apr-19	13:15	00:15	45.3	60.7	38.7	13:15	45.3
26-Apr-19	13:30	00:15	43.5	60.4	37.2	13:30	43.5
26-Apr-19	13:45	00:15	44.9	59.6	34.9	13:45	44.9
26-Apr-19	14:00	00:15	46.1	60.1	35.6	14:00	46.1
26-Apr-19	14:15	00:15	49.7	62.1	34.2	14:15	49.7
26-Apr-19	14:30	00:15	47.3	60.6	36.6	14:30	47.3
26-Apr-19	14:45	00:15	45.3	61.7	37.6	14:45	45.3
26-Apr-19	15:00	00:15	47.2	61.6	35.3	15:00	47.2
26-Apr-19	15:15	00:15	46.8	65.3	37.4	15:15	46.8
26-Apr-19	15:30	00:15	43.2	55.4	36.3	15:30	43.2
26-Apr-19	15:45	00:15	45.0	58.0	36.8	15:45	45.0
26-Apr-19	16:00	00:15	42.1	51.9	35.9	16:00	42.1
26-Apr-19	16:15	00:15	47.4	61.2	36.6	16:15	47.4
26-Apr-19	16:30	00:15	44.1	61.7	34.3	16:30	44.1
26-Apr-19	16:45	00:15	43.3	53.4	37.8	16:45	43.3
		Total Ave	48.9	59.4	40.8		
		Total Min	42.1	49.5	34.2		
		Total Max	59.7	67.9	46.5		



Section F4 of Khevi-Ubisa-Shorapani-Argveta section (E60 Highway)
Environmental Impact Assessment

FIELD SURVEY FORM			
DATE: 26/04/2018	MEASUREMENT SITE: vil. Argveta	SITE NO.: Point 2	FIELD TECHNICIANS: Ilia Mirotdze Vepkhvia Maghlakelidze
SOUND LEVEL METER: (medel) RION NL-52	MICROPHONE: <input checked="" type="checkbox"/> WIND SCREEN <input type="checkbox"/> NON-POLAR <input type="checkbox"/> POLARIZED <input type="checkbox"/> 1/2-INCH <input type="checkbox"/> FREEFIELD <input type="checkbox"/> 1-INCH <input type="checkbox"/> RANDOM		NOTES: SYSTEM PWR: <input checked="" type="checkbox"/> BAT <input type="checkbox"/> AC (observations at start of measurement)
CALIBRATOR: NC 74 (model) S/N 34257042	Freq. Hz. <input type="checkbox"/> 250 <input checked="" type="checkbox"/> 1000 <input type="checkbox"/> _____	CALIBRATION RECORD: Input, dB / Reading, dB / Offset, dB / Time Before 94 / 94 / 0 / 26/04/19, 17:50 After 94 / 94 / 0 / 27/04/19, 18:15	TEMP: _17_ °C R.H.: _47_ % WIND SPEED: ___ 0-2 ___ MP/Sec TOWARD (DIR): S-SE SKIES: Sunny, Partially Cloudy
METER SETTINGS: <input type="checkbox"/> A-WTD <input type="checkbox"/> LINEAR <input checked="" type="checkbox"/> SLOW <input type="checkbox"/> 1/1 OCT <input checked="" type="checkbox"/> INTERVALS 15-MINUTE <input type="checkbox"/> C-WTD <input type="checkbox"/> IMPULSE <input type="checkbox"/> FAST <input type="checkbox"/> 1/3 OCT <input type="checkbox"/> L _N PERCENTILE VALUES			CAMERA _____ PHOTO NOS. _____

NOTES:												Dist. to Center of Nearest Lane _____	<input type="checkbox"/> Video	Counts <u>AT</u> <u>MT</u> <u>HT</u>	MEAS. TYPE: <input checked="" type="checkbox"/> Long Term <input type="checkbox"/> Short Term
DATE	START TIME	STOP TIME	L _{EQ} (24h Ave.)	L _{EQ} (24h Min.)	L _{EQ} (24h Max.)	L _{MIN} (24h Ave.)	L _{MIN} (24h Min.)	L _{MIN} (24h Max.)	L _{MAX} (24h Ave.)	L _{MAX} (24h Min.)	L _{MAX} (24h Max.)	NOTES:			
26/04/2019	18:00:00 PM											Quite area, inside the Garden.			
27/04/2019		18:00:00 PM	41.76	31.30	57.60	33.06	24.60	41.50	55.17	40.80	74.10				



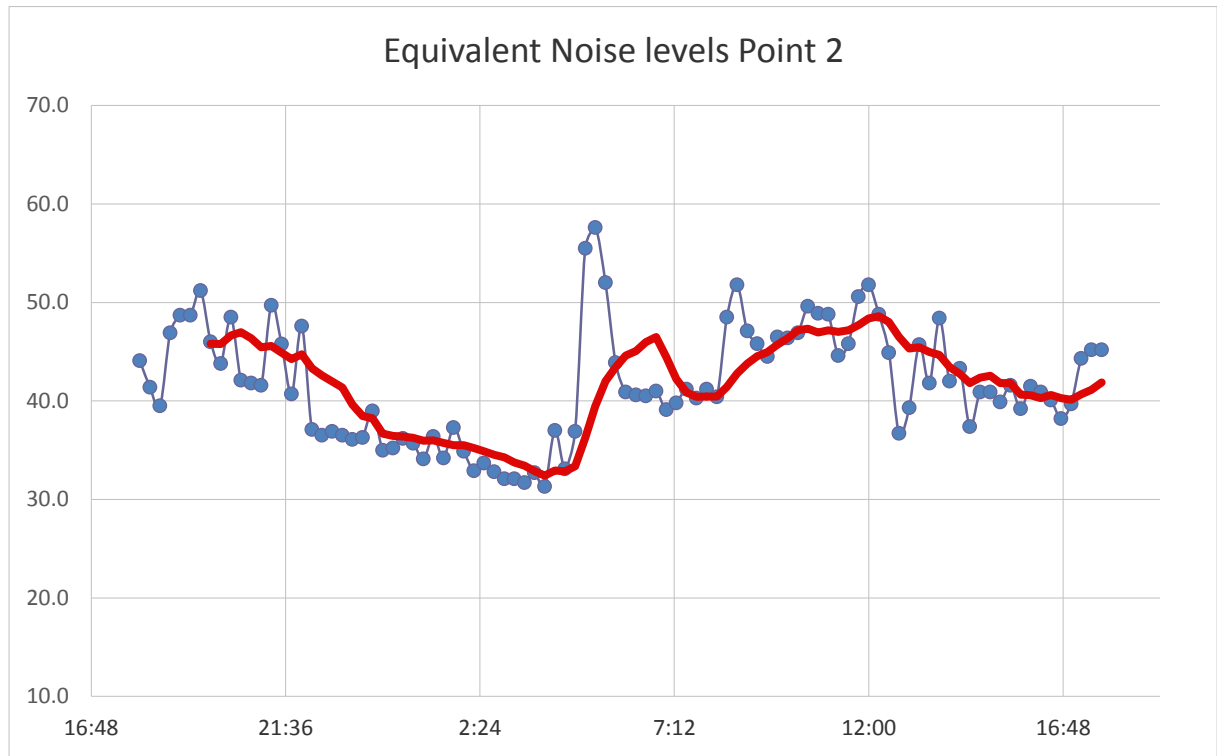
Meas	Beginning Time of Hourly	Interval Duration					

Section F4 of Khevi-Ubisa-Shorapani-Argveta section (E60 Highway)
 Environmental Impact Assessment

Date	Intervals	(seconds)	Leq	Lmax	Lmin		
26-Apr-19	18:00		44.1	61.3	34.9	18:00	44.1
26-Apr-19	18:15	00:15	41.4	47.4	32.5	18:15	41.4
26-Apr-19	18:30	00:15	39.5	53.5	33.2	18:30	39.5
26-Apr-19	18:45	00:15	46.9	58.3	34.0	18:45	46.9
26-Apr-19	19:00	00:15	48.7	64.9	40.7	19:00	48.7
26-Apr-19	19:15	00:15	48.7	65.4	40.2	19:15	48.7
26-Apr-19	19:30	00:15	51.2	59.7	41.2	19:30	51.2
26-Apr-19	19:45	00:15	46.0	60.0	38.5	19:45	46.0
26-Apr-19	20:00	00:15	43.8	59.2	38.6	20:00	43.8
26-Apr-19	20:15	00:15	48.5	63.6	37.8	20:15	48.5
26-Apr-19	20:30	00:15	42.1	55.3	36.5	20:30	42.1
26-Apr-19	20:45	00:15	41.8	50.6	36.7	20:45	41.8
26-Apr-19	21:00	00:15	41.6	49.6	34.4	21:00	41.6
26-Apr-19	21:15	00:15	49.7	62.3	36.3	21:15	49.7
26-Apr-19	21:30	00:15	45.8	59.5	36.2	21:30	45.8
26-Apr-19	21:45	00:15	40.7	54.3	36.8	21:45	40.7
26-Apr-19	22:00	00:15	47.6	68.6	36.0	22:00	47.6
26-Apr-19	22:15	00:15	37.1	45.4	32.5	22:15	37.1
26-Apr-19	22:30	00:15	36.5	45.3	31.2	22:30	36.5
26-Apr-19	22:45	00:15	36.9	47.4	28.1	22:45	36.9
26-Apr-19	23:00	00:15	36.5	48.3	28.4	23:00	36.5
26-Apr-19	23:15	00:15	36.1	44.3	28.8	23:15	36.1
26-Apr-19	23:30	00:15	36.3	45.2	29.8	23:30	36.3
26-Apr-19	23:45	00:15	39.0	47.7	31.6	23:45	39.0
27-Apr-19	00:00	00:15	35.0	42.7	29.4	00:00	35.0
27-Apr-19	00:15	00:15	35.2	48.5	27.1	00:15	35.2
27-Apr-19	00:30	00:15	36.2	46.6	28.8	00:30	36.2
27-Apr-19	00:45	00:15	35.7	52.5	29.4	00:45	35.7
27-Apr-19	01:00	00:15	34.1	41.3	29.7	01:00	34.1
27-Apr-19	01:15	00:15	36.4	48.3	29.3	01:15	36.4
27-Apr-19	01:30	00:15	34.2	42.4	30.0	01:30	34.2
27-Apr-19	01:45	00:15	37.3	53.4	30.6	01:45	37.3
27-Apr-19	02:00	00:15	34.9	44.3	27.8	02:00	34.9
27-Apr-19	02:15	00:15	32.9	47.9	28.3	02:15	32.9
27-Apr-19	02:30	00:15	33.7	41.3	28.0	02:30	33.7
27-Apr-19	02:45	00:15	32.8	47.5	25.8	02:45	32.8
27-Apr-19	03:00	00:15	32.1	44.6	26.5	03:00	32.1
27-Apr-19	03:15	00:15	32.1	45.0	26.5	03:15	32.1
27-Apr-19	03:30	00:15	31.7	43.1	26.1	03:30	31.7
27-Apr-19	03:45	00:15	32.7	50.5	25.4	03:45	32.7
27-Apr-19	04:00	00:15	31.3	40.8	24.9	04:00	31.3
27-Apr-19	04:15	00:15	37.0	47.5	24.6	04:15	37.0
27-Apr-19	04:30	00:15	33.1	42.7	27.0	04:30	33.1
27-Apr-19	04:45	00:15	36.9	52.4	26.1	04:45	36.9
27-Apr-19	05:00	00:15	55.5	63.9	29.1	05:00	55.5
27-Apr-19	05:15	00:15	57.6	66.2	41.5	05:15	57.6
27-Apr-19	05:30	00:15	52.0	67.2	34.9	05:30	52.0
27-Apr-19	05:45	00:15	43.9	58.7	32.3	05:45	43.9
27-Apr-19	06:00	00:15	40.9	54.3	30.8	06:00	40.9
27-Apr-19	06:15	00:15	40.6	52.2	31.7	06:15	40.6

Section F4 of Khevi-Ubisa-Shorapani-Argveta section (E60 Highway)
 Environmental Impact Assessment

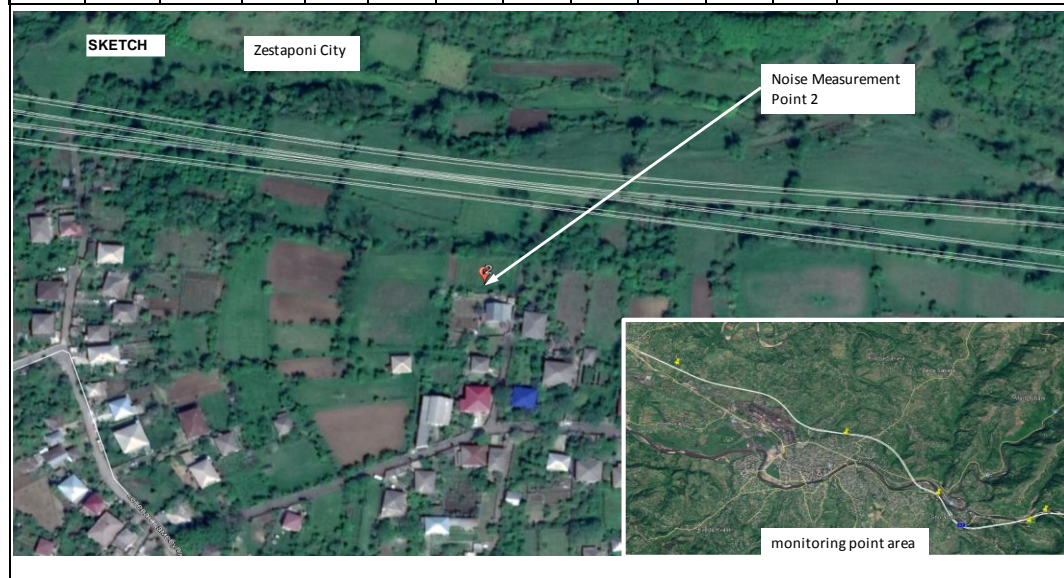
27-Apr-19	06:30	00:15	40.5	52.4	32.8	06:30	40.5
27-Apr-19	06:45	00:15	41.0	53.6	33.6	06:45	41.0
27-Apr-19	07:00	00:15	39.1	55.8	32.7	07:00	39.1
27-Apr-19	07:15	00:15	39.8	55.2	32.0	07:15	39.8
27-Apr-19	07:30	00:15	41.2	52.3	33.9	07:30	41.2
27-Apr-19	07:45	00:15	40.3	52.8	32.6	07:45	40.3
27-Apr-19	08:00	00:15	41.2	55.4	31.6	08:00	41.2
27-Apr-19	08:15	00:15	40.4	55.2	33.5	08:15	40.4
27-Apr-19	08:30	00:15	48.5	72.4	34.1	08:30	48.5
27-Apr-19	08:45	00:15	51.8	66.3	32.2	08:45	51.8
27-Apr-19	09:00	00:15	47.1	69.0	33.9	09:00	47.1
27-Apr-19	09:15	00:15	45.8	63.2	33.1	09:15	45.8
27-Apr-19	09:30	00:15	44.5	64.9	34.1	09:30	44.5
27-Apr-19	09:45	00:15	46.5	61.0	36.7	09:45	46.5
27-Apr-19	10:00	00:15	46.4	64.9	34.9	10:00	46.4
27-Apr-19	10:15	00:15	46.9	62.4	34.8	10:15	46.9
27-Apr-19	10:30	00:15	49.6	66.5	35.7	10:30	49.6
27-Apr-19	10:45	00:15	48.9	65.2	35.6	10:45	48.9
27-Apr-19	11:00	00:15	48.8	68.9	39.7	11:00	48.8
27-Apr-19	11:15	00:15	44.6	56.4	34.8	11:15	44.6
27-Apr-19	11:30	00:15	45.8	64.7	34.0	11:30	45.8
27-Apr-19	11:45	00:15	50.6	65.6	35.1	11:45	50.6
27-Apr-19	12:00	00:15	51.8	74.1	37.1	12:00	51.8
27-Apr-19	12:15	00:15	48.8	68.2	37.5	12:15	48.8
27-Apr-19	12:30	00:15	44.9	62.4	32.7	12:30	44.9
27-Apr-19	12:45	00:15	36.7	48.2	32.3	12:45	36.7
27-Apr-19	13:00	00:15	39.3	59.3	31.8	13:00	39.3
27-Apr-19	13:15	00:15	45.7	64.9	34.3	13:15	45.7
27-Apr-19	13:30	00:15	41.8	54.7	36.1	13:30	41.8
27-Apr-19	13:45	00:15	48.4	70.5	37.3	13:45	48.4
27-Apr-19	14:00	00:15	42.0	54.1	35.3	14:00	42.0
27-Apr-19	14:15	00:15	43.3	55.5	33.5	14:15	43.3
27-Apr-19	14:30	00:15	37.4	55.0	31.9	14:30	37.4
27-Apr-19	14:45	00:15	40.9	52.1	37.8	14:45	40.9
27-Apr-19	15:00	00:15	40.9	50.2	34.3	15:00	40.9
27-Apr-19	15:15	00:15	39.9	55.1	30.1	15:15	39.9
27-Apr-19	15:30	00:15	41.6	54.2	32.5	15:30	41.6
27-Apr-19	15:45	00:15	39.2	47.8	35.4	15:45	39.2
27-Apr-19	16:00	00:15	41.5	49.3	34.7	16:00	41.5
27-Apr-19	16:15	00:15	40.9	51.1	36.6	16:15	40.9
27-Apr-19	16:30	00:15	40.1	57.1	29.8	16:30	40.1
27-Apr-19	16:45	00:15	38.2	48.9	30.1	16:45	38.2
27-Apr-19	17:00	00:15	39.7	50.6	33.3	17:00	39.7
27-Apr-19	17:15	00:15	44.3	58.6	39.7	17:15	44.3
27-Apr-19	17:30	00:15	45.2	55.4	40.3	17:30	45.2
27-Apr-19	17:45	00:15	45.2	52.4	41.4	17:45	45.2
		Total Ave	41.8	55.2	33.1		
		Total Min	31.3	40.8	24.6		
		Total Max	57.6	74.1	41.5		



Section F4 of Khevi-Ubisa-Shorapani-Argveta section (E60 Highway)
Environmental Impact Assessment

FIELD SURVEY FORM			
DATE: 26/04/2018	MEASUREMENT SITE: vil. Argveta	SITE NO.: Point 2	FIELD TECHNICIANS: Iliia Mirotadze Vepkhvia Maghlakelidze
SOUND LEVEL METER: (medel) RION NL-52	MICROPHONE: <input checked="" type="checkbox"/> WIND SCREEN <input type="checkbox"/> NON-POLAR <input type="checkbox"/> POLARIZED <input type="checkbox"/> 1/2-INCH <input type="checkbox"/> FREEFIELD <input type="checkbox"/> 1-INCH <input type="checkbox"/> RANDOM		NOTES: SYSTEM PWR: <input checked="" type="checkbox"/> BAT <input type="checkbox"/> AC (observations at start of measurement) TEMP: _17_ °C R.H.: _47_ % WIND SPEED: <u>0-2</u> MP/Sec TOWARD (DIR): <u>S-SE</u> SKIES: <u>Sunny, Partially Cloudy</u>
CALIBRATOR: <u>NC 74</u> (model) S/N <u>34257042</u>	Freq. Hz. <input type="checkbox"/> 250 <input checked="" type="checkbox"/> 1000 <input type="checkbox"/> _____	CALIBRATION RECORD: Input, dB / Reading, dB / Offset, dB / Time Before <u>94 / 94 / 0 / 26/04/19, 17:50</u> After <u>94 / 94 / 0 / 27/04/19, 18:15</u>	CAMERA _____ PHOTO NOS. _____
METER SETTINGS: <input type="checkbox"/> A-WTD <input type="checkbox"/> LINEAR <input checked="" type="checkbox"/> SLOW <input type="checkbox"/> 1/1 OCT <input checked="" type="checkbox"/> INTERVALS 15- MINUTE <input type="checkbox"/> C-WTD <input type="checkbox"/> IMPULSE <input type="checkbox"/> FAST <input type="checkbox"/> 1/3 OCT <input type="checkbox"/> L _n PERCENTILE VALUES			

NOTES:												Dist. to Center of Nearest Lane _____	<input type="checkbox"/> Video	Counts <input checked="" type="checkbox"/> AT <input type="checkbox"/> MT <input type="checkbox"/> HT	MEAS. TYPE: <input checked="" type="checkbox"/> Long Term <input type="checkbox"/> Short Term
DATE	START TIME	STOP TIME	L _{EQ} (24h Ave.)	L _{EQ} (24h Min.)	L _{EQ} (24h Max.)	L _{MIN} (24h Ave.)	L _{MIN} (24h Min.)	L _{MIN} (24h Max.)	L _{MAX} (24h Ave.)	L _{MAX} (24h Min.)	L _{MAX} (24h Max.)	NOTES:			
26/04/2019	18:00:00 PM											Quite area, inside the Garden.			
27/04/2019		18:00:00 PM	41.76	31.30	57.60	33.06	24.60	41.50	55.17	40.80	74.10				



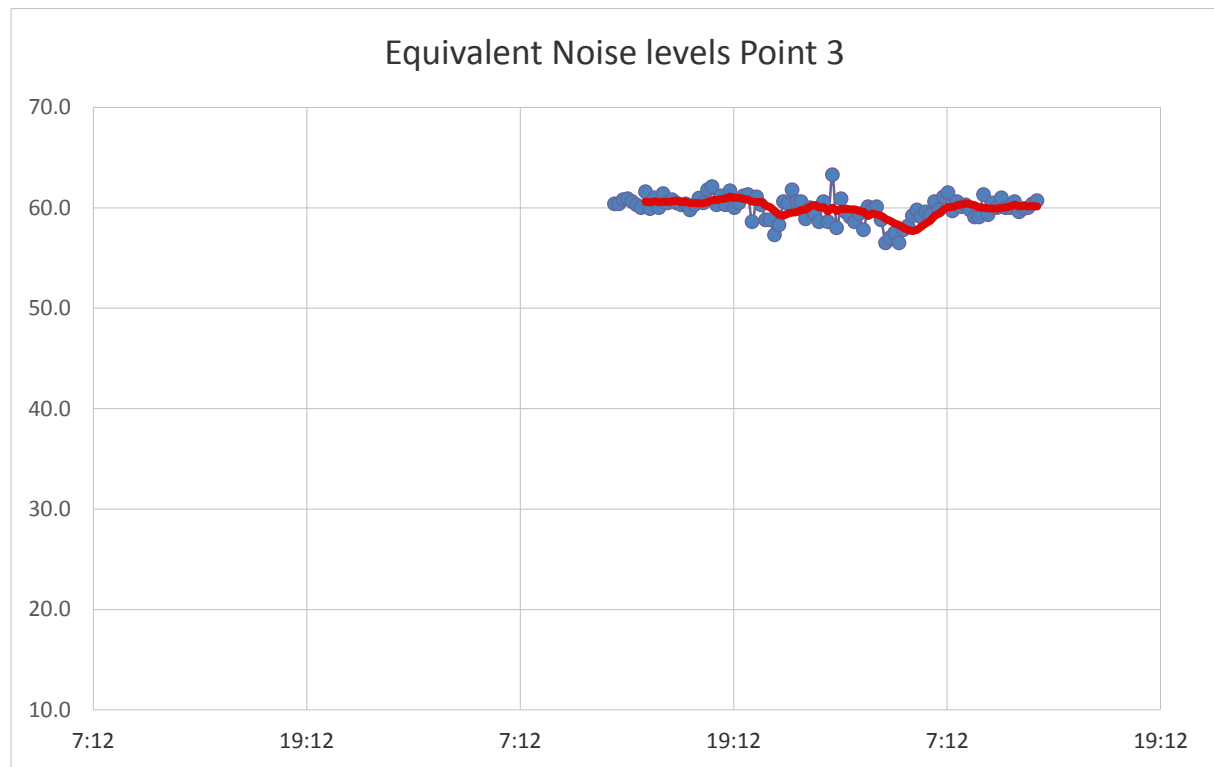
Meas	Beginning Time of Hourly	Interval Duration					

Section F4 of Khevi-Ubisa-Shorapani-Argveta section (E60 Highway)
 Environmental Impact Assessment

Date	Intervals	(seconds)	Leq	Lmax	Lmin		
30-Apr-19	12:30		60.4	70.2	37.5	12:30	60.4
30-Apr-19	12:45	00:15	60.4	68.9	39.9	12:45	60.4
30-Apr-19	13:00	00:15	60.8	71.4	38.8	13:00	60.8
30-Apr-19	13:15	00:15	60.9	70.9	37.6	13:15	60.9
30-Apr-19	13:30	00:15	60.6	70.9	44.2	13:30	60.6
30-Apr-19	13:45	00:15	60.3	70.8	40.6	13:45	60.3
30-Apr-19	14:00	00:15	60.0	72.1	42.0	14:00	60.0
30-Apr-19	14:15	00:15	61.6	76.1	39.9	14:15	61.6
30-Apr-19	14:30	00:15	59.9	70.4	40.4	14:30	59.9
30-Apr-19	14:45	00:15	61.0	72.0	36.3	14:45	61.0
30-Apr-19	15:00	00:15	60.0	70.0	40.0	15:00	60.0
30-Apr-19	15:15	00:15	61.4	72.3	38.9	15:15	61.4
30-Apr-19	15:30	00:15	60.5	74.6	38.8	15:30	60.5
30-Apr-19	15:45	00:15	60.8	70.9	40.8	15:45	60.8
30-Apr-19	16:00	00:15	60.5	71.8	42.9	16:00	60.5
30-Apr-19	16:15	00:15	60.3	70.3	41.2	16:15	60.3
30-Apr-19	16:30	00:15	60.4	71.7	39.9	16:30	60.4
30-Apr-19	16:45	00:15	59.8	70.5	38.8	16:45	59.8
30-Apr-19	17:00	00:15	60.3	77.3	41.2	17:00	60.3
30-Apr-19	17:15	00:15	61.0	72.7	39.7	17:15	61.0
30-Apr-19	17:30	00:15	60.5	74.1	39.5	17:30	60.5
30-Apr-19	17:45	00:15	61.8	72.1	37.1	17:45	61.8
30-Apr-19	18:00	00:15	62.1	72.9	40.5	18:00	62.1
30-Apr-19	18:15	00:15	60.3	71.5	37.0	18:15	60.3
30-Apr-19	18:30	00:15	61.2	70.4	38.2	18:30	61.2
30-Apr-19	18:45	00:15	60.3	72.3	37.0	18:45	60.3
30-Apr-19	19:00	00:15	61.7	71.2	40.5	19:00	61.7
30-Apr-19	19:15	00:15	60.0	70.6	41.9	19:15	60.0
30-Apr-19	19:30	00:15	60.5	70.4	42.1	19:30	60.5
30-Apr-19	19:45	00:15	61.2	72.1	42.0	19:45	61.2
30-Apr-19	20:00	00:15	61.3	70.4	44.5	20:00	61.3
30-Apr-19	20:15	00:15	58.6	70.1	40.5	20:15	58.6
30-Apr-19	20:30	00:15	61.1	75.3	38.6	20:30	61.1
30-Apr-19	20:45	00:15	60.3	72.4	42.4	20:45	60.3
30-Apr-19	21:00	00:15	58.8	71.6	40.1	21:00	58.8
30-Apr-19	21:15	00:15	58.8	72.3	40.6	21:15	58.8
30-Apr-19	21:30	00:15	57.3	66.7	38.0	21:30	57.3
30-Apr-19	21:45	00:15	58.3	68.8	38.3	21:45	58.3
30-Apr-19	22:00	00:15	60.6	71.8	40.2	22:00	60.6
30-Apr-19	22:15	00:15	60.4	72.6	38.7	22:15	60.4
30-Apr-19	22:30	00:15	61.8	72.3	38.2	22:30	61.8
30-Apr-19	22:45	00:15	60.6	70.6	37.5	22:45	60.6
30-Apr-19	23:00	00:15	60.6	72.1	38.9	23:00	60.6
30-Apr-19	23:15	00:15	58.9	70.2	35.8	23:15	58.9
30-Apr-19	23:30	00:15	60.0	75.1	36.7	23:30	60.0
30-Apr-19	23:45	00:15	59.4	70.7	36.4	23:45	59.4
01-May-19	00:00	00:15	58.6	70.1	36.3	00:00	58.6
01-May-19	00:15	00:15	60.6	69.6	37.9	00:15	60.6
01-May-19	00:30	00:15	58.6	70.6	35.7	00:30	58.6
01-May-19	00:45	00:15	63.3	84.0	35.5	00:45	63.3

Section F4 of Khevi-Ubisa-Shorapani-Argveta section (E60 Highway)
 Environmental Impact Assessment

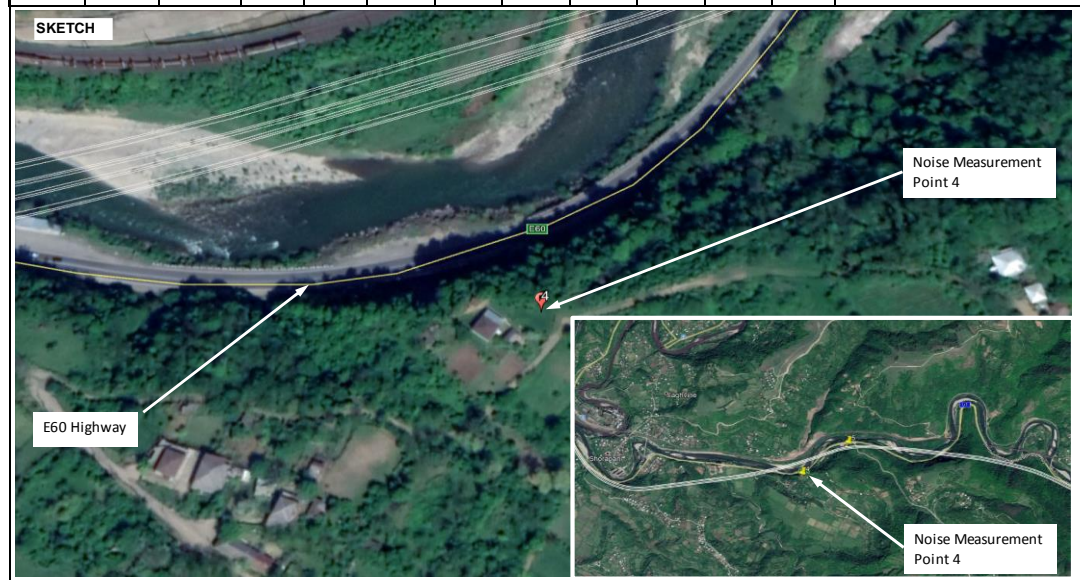
01-May-19	01:00	00:15	58.0	70.3	36.3	01:00	58.0
01-May-19	01:15	00:15	60.9	73.2	38.4	01:15	60.9
01-May-19	01:30	00:15	59.6	71.4	38.3	01:30	59.6
01-May-19	01:45	00:15	59.1	69.4	39.1	01:45	59.1
01-May-19	02:00	00:15	58.6	74.7	34.9	02:00	58.6
01-May-19	02:15	00:15	59.4	74.0	33.9	02:15	59.4
01-May-19	02:30	00:15	57.8	68.9	32.6	02:30	57.8
01-May-19	02:45	00:15	60.1	69.9	34.2	02:45	60.1
01-May-19	03:00	00:15	59.9	75.8	34.2	03:00	59.9
01-May-19	03:15	00:15	60.1	73.4	40.5	03:15	60.1
01-May-19	03:30	00:15	58.8	70.2	36.8	03:30	58.8
01-May-19	03:45	00:15	56.5	72.8	36.4	03:45	56.5
01-May-19	04:00	00:15	57.0	69.6	34.6	04:00	57.0
01-May-19	04:15	00:15	57.5	68.1	36.1	04:15	57.5
01-May-19	04:30	00:15	56.5	69.2	35.8	04:30	56.5
01-May-19	04:45	00:15	57.8	72.4	36.0	04:45	57.8
01-May-19	05:00	00:15	58.2	74.5	36.5	05:00	58.2
01-May-19	05:15	00:15	59.2	70.3	37.8	05:15	59.2
01-May-19	05:30	00:15	59.8	71.8	45.7	05:30	59.8
01-May-19	05:45	00:15	59.1	74.1	40.1	05:45	59.1
01-May-19	06:00	00:15	59.6	72.1	37.4	06:00	59.6
01-May-19	06:15	00:15	59.3	71.4	39.0	06:15	59.3
01-May-19	06:30	00:15	60.6	70.1	41.0	06:30	60.6
01-May-19	06:45	00:15	59.8	71.4	39.8	06:45	59.8
01-May-19	07:00	00:15	61.1	72.0	40.1	07:00	61.1
01-May-19	07:15	00:15	61.5	73.4	39.8	07:15	61.5
01-May-19	07:30	00:15	59.7	71.7	40.6	07:30	59.7
01-May-19	07:45	00:15	60.6	71.7	38.5	07:45	60.6
01-May-19	08:00	00:15	60.1	74.0	38.3	08:00	60.1
01-May-19	08:15	00:15	60.3	69.7	37.2	08:15	60.3
01-May-19	08:30	00:15	59.8	71.8	37.0	08:30	59.8
01-May-19	08:45	00:15	59.1	69.9	38.3	08:45	59.1
01-May-19	09:00	00:15	59.1	70.0	37.3	09:00	59.1
01-May-19	09:15	00:15	61.3	78.0	40.0	09:15	61.3
01-May-19	09:30	00:15	59.3	71.9	39.4	09:30	59.3
01-May-19	09:45	00:15	60.5	73.1	37.0	09:45	60.5
01-May-19	10:00	00:15	60.0	71.6	40.3	10:00	60.0
01-May-19	10:15	00:15	61.0	73.8	38.1	10:15	61.0
01-May-19	10:30	00:15	60.0	70.8	35.1	10:30	60.0
01-May-19	10:45	00:15	60.0	74.3	36.4	10:45	60.0
01-May-19	11:00	00:15	60.6	72.9	41.1	11:00	60.6
01-May-19	11:15	00:15	59.6	71.4	36.1	11:15	59.6
01-May-19	11:30	00:15	59.9	70.8	37.9	11:30	59.9
01-May-19	11:45	00:15	60.0	73.2	35.9	11:45	60.0
01-May-19	12:00	00:15	60.4	72.0	36.9	12:00	60.4
01-May-19	12:15	00:15	60.7	72.6	35.9	12:15	60.7
		Total Ave	60.0	71.9	38.5		
		Total Min	56.5	66.7	32.6		
		Total Max	63.3	84.0	45.7		



Section F4 of Khevi-Ubisa-Shorapani-Argveta section (E60 Highway)
Environmental Impact Assessment

FIELD SURVEY FORM			
DATE: 01/05/2018	MEASUREMENT SITE: Near Rikoti Highway	SITE NO.: Point 4	FIELD TECHNICIANS: Iliia Mirotdadze Vepkhvia Maghlakelidze
SOUND LEVEL METER: (model) RION NL-52	MICROPHONE: <input checked="" type="checkbox"/> WIND SCREEN <input type="checkbox"/> NON-POLAR <input type="checkbox"/> POLARIZED <input type="checkbox"/> 1/2-INCH <input type="checkbox"/> FREEFIELD <input type="checkbox"/> 1-INCH <input type="checkbox"/> RANDOM		NOTES: SYSTEM PWR: <input checked="" type="checkbox"/> BAT <input type="checkbox"/> AC (observations at start of measurement)
CALIBRATOR: NC 74 (model) S/N 34257042	Freq. Hz. <input type="checkbox"/> 250 <input checked="" type="checkbox"/> 1000 <input type="checkbox"/> _____	CALIBRATION RECORD: Input, dB / Reading, dB / Offset, dB / Time Before 94 / 94 / 0 / 30/04/19, 13:20 After 94 / 94 / 0 / 01/05/19, 13:45	TEMP: _16_ °C R.H.: _52_ % WIND SPEED: _0-2_ MP/Sec TOWARD (DIR): S-SE SKIES: Sunny, Partially Cloudy
METER SETTINGS: <input type="checkbox"/> A-WTD <input type="checkbox"/> LINEAR <input checked="" type="checkbox"/> SLOW <input type="checkbox"/> 1/1 OCT <input checked="" type="checkbox"/> INTERVALS 15- MINUTE <input type="checkbox"/> C-WTD <input type="checkbox"/> IMPULSE <input type="checkbox"/> FAST <input type="checkbox"/> 1/3 OCT <input type="checkbox"/> L _N PERCENTILE VALUES			CAMERA _____ PHOTO NOS. _____

NOTES:												Dist. to Center of Nearest Lane _____			<input type="checkbox"/> Video <input type="checkbox"/> Radar			Counts <u>AT</u> <u>MT</u> <u>HT</u>			MEAS. TYPE: <input checked="" type="checkbox"/> Long Term <input type="checkbox"/> Short Term	
DATE	START TIME	STOP TIME	L _{EQ} (24h Ave.)	L _{EQ} (24h Min.)	L _{EQ} (24h Max.)	L _{MIN} (24h Ave.)	L _{MIN} (24h Min.)	L _{MIN} (24h Max.)	L _{MAX} (24h Ave.)	L _{MAX} (24h Min.)	L _{MAX} (24h Max.)	NOTES:										
01/04/2019	13:30:00 PM											Near to the E60 Highway, high traffic on the road										
02/05/2019		13:30:00 PM	50.35	41.50	56.80	40.73	35.80	50.50	62.84	49.60	77.00											



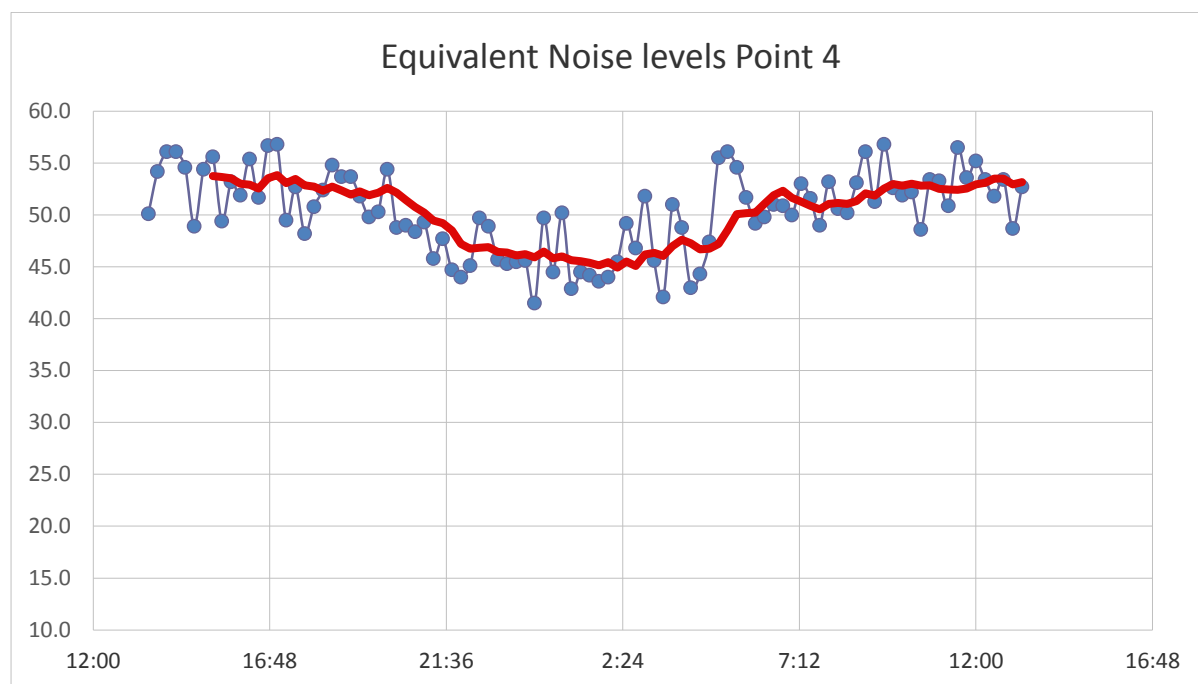
	Beginning Time of	Interval					
Meas	Hourly	Duration					
Date	Intervals	(seconds)	Leq	Lmax	Lmin		

Section F4 of Khevi-Ubisa-Shorapani-Argveta section (E60 Highway)
 Environmental Impact Assessment

01-May-19	13:30		50.1	74.1	39.3	13:30	50.1
01-May-19	13:45	00:15	54.2	73.8	41.8	13:45	54.2
01-May-19	14:00	00:15	56.1	71.7	39.7	14:00	56.1
01-May-19	14:15	00:15	56.1	71.0	41.1	14:15	56.1
01-May-19	14:30	00:15	54.6	67.9	40.4	14:30	54.6
01-May-19	14:45	00:15	48.9	68.7	40.3	14:45	48.9
01-May-19	15:00	00:15	54.4	66.4	39.9	15:00	54.4
01-May-19	15:15	00:15	55.6	72.3	41.2	15:15	55.6
01-May-19	15:30	00:15	49.4	63.9	39.7	15:30	49.4
01-May-19	15:45	00:15	53.2	63.7	41.2	15:45	53.2
01-May-19	16:00	00:15	51.9	62.6	42.0	16:00	51.9
01-May-19	16:15	00:15	55.4	71.1	43.7	16:15	55.4
01-May-19	16:30	00:15	51.7	65.0	43.3	16:30	51.7
01-May-19	16:45	00:15	56.7	73.2	42.6	16:45	56.7
01-May-19	17:00	00:15	56.8	72.0	43.2	17:00	56.8
01-May-19	17:15	00:15	49.5	60.4	40.1	17:15	49.5
01-May-19	17:30	00:15	52.7	64.7	41.1	17:30	52.7
01-May-19	17:45	00:15	48.2	60.7	40.0	17:45	48.2
01-May-19	18:00	00:15	50.8	67.5	42.3	18:00	50.8
01-May-19	18:15	00:15	52.4	65.7	40.9	18:15	52.4
01-May-19	18:30	00:15	54.8	67.3	45.6	18:30	54.8
01-May-19	18:45	00:15	53.7	68.0	43.2	18:45	53.7
01-May-19	19:00	00:15	53.7	68.0	43.2	19:00	53.7
01-May-19	19:15	00:15	51.8	63.9	42.1	19:15	51.8
01-May-19	19:30	00:15	49.8	64.3	44.4	19:30	49.8
01-May-19	19:45	00:15	50.3	61.3	44.5	19:45	50.3
01-May-19	20:00	00:15	54.4	67.4	44.6	20:00	54.4
01-May-19	20:15	00:15	48.8	60.4	40.6	20:15	48.8
01-May-19	20:30	00:15	49.0	61.2	40.8	20:30	49.0
01-May-19	20:45	00:15	48.4	61.4	38.3	20:45	48.4
01-May-19	21:00	00:15	49.3	65.8	40.1	21:00	49.3
01-May-19	21:15	00:15	45.8	52.0	38.6	21:15	45.8
01-May-19	21:30	00:15	47.7	58.0	38.8	21:30	47.7
01-May-19	21:45	00:15	44.7	55.9	37.5	21:45	44.7
01-May-19	22:00	00:15	44.0	50.1	37.4	22:00	44.0
01-May-19	22:15	00:15	45.1	56.5	35.8	22:15	45.1
01-May-19	22:30	00:15	49.7	59.0	37.7	22:30	49.7
01-May-19	22:45	00:15	48.9	60.7	37.7	22:45	48.9
01-May-19	23:00	00:15	45.7	54.8	38.7	23:00	45.7
01-May-19	23:15	00:15	45.3	51.4	38.8	23:15	45.3
01-May-19	23:30	00:15	45.5	51.5	36.9	23:30	45.5
01-May-19	23:45	00:15	45.6	52.8	38.1	23:45	45.6
02-May-19	00:00	00:15	41.5	51.4	38.4	00:00	41.5
02-May-19	00:15	00:15	49.7	62.6	38.3	00:15	49.7
02-May-19	00:30	00:15	44.5	53.5	36.6	00:30	44.5
02-May-19	00:45	00:15	50.2	60.5	38.2	00:45	50.2
02-May-19	01:00	00:15	42.9	50.4	36.1	01:00	42.9
02-May-19	01:15	00:15	44.5	52.4	36.9	01:15	44.5
02-May-19	01:30	00:15	44.2	51.1	36.4	01:30	44.2
02-May-19	01:45	00:15	43.6	51.0	37.1	01:45	43.6
02-May-19	02:00	00:15	44.0	53.3	37.1	02:00	44.0

Section F4 of Khevi-Ubisa-Shorapani-Argveta section (E60 Highway)
 Environmental Impact Assessment

02-May-19	02:15	00:15	45.5	57.7	37.8	02:15	45.5
02-May-19	02:30	00:15	49.2	58.3	38.5	02:30	49.2
02-May-19	02:45	00:15	46.8	58.8	37.4	02:45	46.8
02-May-19	03:00	00:15	51.8	63.7	37.3	03:00	51.8
02-May-19	03:15	00:15	45.6	52.5	37.9	03:15	45.6
02-May-19	03:30	00:15	42.1	49.6	37.3	03:30	42.1
02-May-19	03:45	00:15	51.0	62.8	38.3	03:45	51.0
02-May-19	04:00	00:15	48.8	58.6	39.0	04:00	48.8
02-May-19	04:15	00:15	43.0	52.9	38.1	04:15	43.0
02-May-19	04:30	00:15	44.3	51.9	38.2	04:30	44.3
02-May-19	04:45	00:15	47.4	56.1	38.6	04:45	47.4
02-May-19	05:00	00:15	55.5	60.1	50.1	05:00	55.5
02-May-19	05:15	00:15	56.1	68.7	48.7	05:15	56.1
02-May-19	05:30	00:15	54.6	67.4	47.0	05:30	54.6
02-May-19	05:45	00:15	51.7	64.4	42.1	05:45	51.7
02-May-19	06:00	00:15	49.2	63.6	41.7	06:00	49.2
02-May-19	06:15	00:15	49.8	58.5	44.0	06:15	49.8
02-May-19	06:30	00:15	51.0	61.6	43.6	06:30	51.0
02-May-19	06:45	00:15	50.9	65.4	41.7	06:45	50.9
02-May-19	07:00	00:15	50.0	60.4	42.7	07:00	50.0
02-May-19	07:15	00:15	53.0	65.3	42.4	07:15	53.0
02-May-19	07:30	00:15	51.6	63.7	44.6	07:30	51.6
02-May-19	07:45	00:15	49.0	57.8	42.1	07:45	49.0
02-May-19	08:00	00:15	53.2	67.7	42.5	08:00	53.2
02-May-19	08:15	00:15	50.6	65.7	41.8	08:15	50.6
02-May-19	08:30	00:15	50.2	64.9	40.7	08:30	50.2
02-May-19	08:45	00:15	53.1	67.1	41.8	08:45	53.1
02-May-19	09:00	00:15	56.1	69.8	42.7	09:00	56.1
02-May-19	09:15	00:15	51.3	67.9	41.5	09:15	51.3
02-May-19	09:30	00:15	56.8	70.4	43.9	09:30	56.8
02-May-19	09:45	00:15	52.6	69.4	39.9	09:45	52.6
02-May-19	10:00	00:15	51.9	69.4	39.9	10:00	51.9
02-May-19	10:15	00:15	52.2	71.8	42.6	10:15	52.2
02-May-19	10:30	00:15	48.6	60.0	39.8	10:30	48.6
02-May-19	10:45	00:15	53.4	66.1	42.4	10:45	53.4
02-May-19	11:00	00:15	53.3	67.8	42.3	11:00	53.3
02-May-19	11:15	00:15	50.9	69.1	40.7	11:15	50.9
02-May-19	11:30	00:15	56.5	77.0	39.7	11:30	56.5
02-May-19	11:45	00:15	53.6	68.6	41.4	11:45	53.6
02-May-19	12:00	00:15	55.2	72.5	42.2	12:00	55.2
02-May-19	12:15	00:15	53.4	72.6	40.3	12:15	53.4
02-May-19	12:30	00:15	51.8	64.9	40.7	12:30	51.8
02-May-19	12:45	00:15	53.4	69.1	40.2	12:45	53.4
02-May-19	13:00	00:15	48.7	57.9	50.5	13:00	48.7
02-May-19	13:15	00:15	52.7	68.4	40.8	13:15	52.7
		Total Ave	50.3	62.8	40.7		
		Total Min	41.5	49.6	35.8		
		Total Max	56.8	77.0	50.5		



Section F4 of Khevi-Ubisa-Shorapani-Argveta section (E60 Highway)
 Environmental Impact Assessment

FIELD SURVEY FORM			
DATE: 06/05/2018	MEASUREMENT SITE: Near Rikoti Highway	SITE NO.: Point 5	FIELD TECHNICIANS: Ilia Mirotadze Vepkhvia Maghlakelidze
SOUND LEVEL METER: (model) RION NL-52	MICROPHONE: <input checked="" type="checkbox"/> WIND SCREEN <input type="checkbox"/> NON-POLAR <input type="checkbox"/> POLARIZED <input type="checkbox"/> 1/2-INCH <input type="checkbox"/> FREEFIELD <input type="checkbox"/> 1-INCH <input type="checkbox"/> RANDOM		NOTES: SYSTEM PWR: <input checked="" type="checkbox"/> BAT <input type="checkbox"/> AC (observations at start of measurement) TEMP: _21_ °C R.H.: _58_ % WIND SPEED: _0_ MP/Sec TOWARD (DIR): Still SKIES: Sunny, Partially Cloudy
CALIBRATOR: NC 74 (model) S/N 34257042	Freq. Hz. <input type="checkbox"/> 250 <input checked="" type="checkbox"/> 1000 <input type="checkbox"/> _____	CALIBRATION RECORD: Input, dB / Reading, dB / Offset, dB / Time Before 94 / 94 / 0 / 06/05/19, 10:35 After 94 / 94 / 0 / 07/05/19, 11:25	CAMERA _____ PHOTO NOS. _____
METER SETTINGS: <input type="checkbox"/> A-WTD <input type="checkbox"/> LINEAR <input checked="" type="checkbox"/> SLOW <input type="checkbox"/> 1/1 OCT <input checked="" type="checkbox"/> INTERVALS 15-MINUTE <input type="checkbox"/> C-WTD <input type="checkbox"/> IMPULSE <input type="checkbox"/> FAST <input type="checkbox"/> 1/3 OCT <input type="checkbox"/> L _N PERCENTILE VALUES			

NOTES:		Dist. to Center of Nearest Lane _____	<input type="checkbox"/> Video	Counts <u>AT</u> <u>MT</u> <u>HT</u>	MEAS. TYPE: <input checked="" type="checkbox"/> Long Term <input type="checkbox"/> Short Term							
DATE	START TIME	STOP TIME	L _{EQ} (24h Ave.)	L _{EQ} (24h Min.)	L _{EQ} (24h Max.)	L _{MIN} (24h Ave.)	L _{MIN} (24h Min.)	L _{MIN} (24h Max.)	L _{MAX} (24h Ave.)	L _{MAX} (24h Min.)	L _{MAX} (24h Max.)	NOTES:
06/05/2019	11:00											In some 30 meters distance from existing E60 Highway, high traffic on the road, Point located between existing and planned corridor.
07/05/2019		11:00	60.13	56.90	70.10	71.47	65.90	90.90	53.33	52.50	57.20	



Section F4 of Khevi-Ubisa-Shorapani-Argveta section (E60 Highway)
 Environmental Impact Assessment

	Beginning Time of	Interval				
Meas	Hourly	Duration				
Date	Intervals	(seconds)	Leq	Lmax	Lmin	
06-May-19	11:00		59.2	70.4	53.2	59.2
06-May-19	11:15	00:15	61.4	76.5	53.3	61.4
06-May-19	11:30	00:15	60.1	73.4	53.3	60.1
06-May-19	11:45	00:15	60.7	72.7	53.2	60.7
06-May-19	12:00	00:15	59.4	69.0	52.9	59.4
06-May-19	12:15	00:15	60.2	75.1	53.0	60.2
06-May-19	12:30	00:15	60.4	71.0	53.0	60.4
06-May-19	12:45	00:15	61.1	74.5	53.0	61.1
06-May-19	13:00	00:15	61.2	76.4	52.8	61.2
06-May-19	13:15	00:15	59.6	69.3	52.5	59.6
06-May-19	13:30	00:15	59.4	73.8	52.8	59.4
06-May-19	13:45	00:15	59.4	72.4	52.6	59.4
06-May-19	14:00	00:15	59.7	69.8	52.8	59.7
06-May-19	14:15	00:15	60.3	71.1	52.5	60.3
06-May-19	14:30	00:15	60.2	73.5	52.6	60.2
06-May-19	14:45	00:15	59.3	70.9	52.7	59.3
06-May-19	15:00	00:15	59.5	70.5	52.7	59.5
06-May-19	15:15	00:15	60.7	71.3	53.1	60.7
06-May-19	15:30	00:15	62.3	73.1	53.4	62.3
06-May-19	15:45	00:15	60.4	71.2	53.1	60.4
06-May-19	16:00	00:15	61.1	71.6	52.8	61.1
06-May-19	16:15	00:15	61.0	71.1	53.2	61.0
06-May-19	16:30	00:15	61.9	77.0	53.1	61.9
06-May-19	16:45	00:15	60.8	70.1	53.4	60.8
06-May-19	17:00	00:15	60.8	68.8	53.4	60.8
06-May-19	17:15	00:15	60.5	69.8	53.6	60.5
06-May-19	17:30	00:15	60.2	69.6	53.5	60.2
06-May-19	17:45	00:15	60.6	70.6	53.6	60.6
06-May-19	18:00	00:15	60.2	75.7	53.5	60.2
06-May-19	18:15	00:15	62.1	80.0	53.4	62.1
06-May-19	18:30	00:15	63.7	84.8	53.3	63.7
06-May-19	18:45	00:15	59.6	72.1	53.4	59.6
06-May-19	19:00	00:15	60.6	73.8	53.5	60.6
06-May-19	19:15	00:15	63.4	77.1	53.5	63.4
06-May-19	19:30	00:15	61.0	69.7	53.6	61.0
06-May-19	19:45	00:15	61.7	72.9	53.5	61.7
06-May-19	20:00	00:15	60.5	73.1	53.9	60.5
06-May-19	20:15	00:15	59.9	72.8	53.7	59.9
06-May-19	20:30	00:15	60.1	69.6	53.3	60.1
06-May-19	20:45	00:15	70.1	90.9	53.3	70.1
06-May-19	21:00	00:15	60.6	73.3	53.3	60.6
06-May-19	21:15	00:15	60.2	68.8	53.3	60.2
06-May-19	21:30	00:15	60.2	69.0	53.2	60.2
06-May-19	21:45	00:15	60.9	68.7	53.3	60.9
06-May-19	22:00	00:15	60.1	68.5	53.2	60.1
06-May-19	22:15	00:15	60.5	70.5	53.3	60.5
06-May-19	22:30	00:15	60.2	70.7	53.3	60.2

Section F4 of Khevi-Ubisa-Shorapani-Argveta section (E60 Highway)
 Environmental Impact Assessment

06-May-19	22:45	00:15	60.9	70.9	53.3	60.9
06-May-19	23:00	00:15	59.8	70.0	53.2	59.8
06-May-19	23:15	00:15	60.4	69.0	53.3	60.4
06-May-19	23:30	00:15	59.7	72.9	53.2	59.7
06-May-19	23:45	00:15	59.6	69.0	53.2	59.6
07-May-19	00:00	00:15	61.0	68.4	57.2	61.0
07-May-19	00:15	00:15	60.4	75.9	54.0	60.4
07-May-19	00:30	00:15	60.0	69.3	53.1	60.0
07-May-19	00:45	00:15	58.9	68.9	53.2	58.9
07-May-19	01:00	00:15	59.2	70.0	53.3	59.2
07-May-19	01:15	00:15	58.2	69.4	53.3	58.2
07-May-19	01:30	00:15	58.2	67.5	53.2	58.2
07-May-19	01:45	00:15	59.5	70.9	53.2	59.5
07-May-19	02:00	00:15	58.1	68.4	53.1	58.1
07-May-19	02:15	00:15	58.7	68.1	53.1	58.7
07-May-19	02:30	00:15	56.9	65.9	53.3	56.9
07-May-19	02:45	00:15	57.6	67.2	53.1	57.6
07-May-19	03:00	00:15	57.7	71.5	53.3	57.7
07-May-19	03:15	00:15	57.5	68.9	53.3	57.5
07-May-19	03:30	00:15	57.3	70.4	53.2	57.3
07-May-19	03:45	00:15	56.9	67.4	53.3	56.9
07-May-19	04:00	00:15	57.7	68.1	53.1	57.7
07-May-19	04:15	00:15	58.4	68.5	53.3	58.4
07-May-19	04:30	00:15	58.7	70.7	53.2	58.7
07-May-19	04:45	00:15	57.3	67.9	53.2	57.3
07-May-19	05:00	00:15	59.4	71.1	53.7	59.4
07-May-19	05:15	00:15	61.0	69.5	55.8	61.0
07-May-19	05:30	00:15	60.4	71.2	54.2	60.4
07-May-19	05:45	00:15	58.9	70.1	53.6	58.9
07-May-19	06:00	00:15	58.9	69.1	53.7	58.9
07-May-19	06:15	00:15	58.7	69.7	53.7	58.7
07-May-19	06:30	00:15	60.2	75.0	53.6	60.2
07-May-19	06:45	00:15	60.3	69.2	53.6	60.3
07-May-19	07:00	00:15	58.8	67.5	53.6	58.8
07-May-19	07:15	00:15	60.7	71.9	53.8	60.7
07-May-19	07:30	00:15	60.9	69.9	53.6	60.9
07-May-19	07:45	00:15	61.5	72.9	53.4	61.5
07-May-19	08:00	00:15	64.0	79.2	53.4	64.0
07-May-19	08:15	00:15	62.1	75.6	53.4	62.1
07-May-19	08:30	00:15	60.5	70.9	53.5	60.5
07-May-19	08:45	00:15	61.3	72.9	53.5	61.3
07-May-19	09:00	00:15	61.3	72.3	53.5	61.3
07-May-19	09:15	00:15	59.7	73.4	53.1	59.7
07-May-19	09:30	00:15	60.2	70.8	53.1	60.2
07-May-19	09:45	00:15	59.6	68.5	53.1	59.6
07-May-19	10:00	00:15	58.5	68.9	52.9	58.5
07-May-19	10:15	00:15	59.9	70.4	52.8	59.9
07-May-19	10:30	00:15	59.9	69.7	53.1	59.9
07-May-19	10:45	00:15	59.9	69.8	53.1	59.9
		Total Ave	60.1	71.5	53.3	

Section F4 of Khevi-Ubisa-Shorapani-Argveta section (E60 Highway)
 Environmental Impact Assessment

		Total Min	56.9	65.9	52.5	
		Total Max	70.1	90.9	57.2	

